

Visual IR Thermometers

The Fluke Visual IR Thermometer combines the convenience of an infrared thermometer with the visual advantage of a thermal imager creating a brand new tool category – a troubleshooting camera with infrared heat map.



Fluke VT02 and VT04 Visual IR Thermometers

FLUKE®

New



Fluke VT02 and VT04

Detect Issues Instantly

Fluke Visual IR Thermometers combine the convenience of a spot thermometer with the visual advantage of an infrared camera creating a brand new tool category. Detect Issues instantly.

Key features of a Visual IR Thermometer

Breakthrough affordability
Half the cost of infrared cameras that require training and software.

Built-in digital camera
Every Fluke Visual IR thermometer has a built-in digital camera.

Exclusive thermal heat map blending overlay
Blend digital and thermal images to instantly show the exact location of the issue. Blend between 0 %, 25 %, 50 %, 75 %, and full thermal with one button.

No training required
Fully automatic with built-in intelligence.

True pocket size design
Forty percent smaller than entry-level infrared cameras.

SmartView® reporting software
Store up to 10,000 images per GB on included SD card and make professional reports on included professional software.

Hot and cold spot trackers
Automatically identifies hottest and coldest spots within field of view.

The Fluke VT04 adds powerful features that include:

Powerful resolution with PyroBlend™ Plus optics

- Best-in-class field of view for tight spaces: 28° x 28°
- Four times sharper images: VT04 compared to VT02

Alarm and time lapse features

- Hi/Lo temperature alarm—Screen flashes if user-selected temperature is exceeded
- Time lapse image capture—automatically capture images
- Auto-monitor™ alarm—automatically capture images after a userselected temperature alarm has been triggered

See the difference

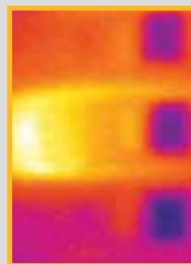
See how a traditional IR thermometer and an entry level infrared camera make it challenging to communicate the issue on breaker 20.



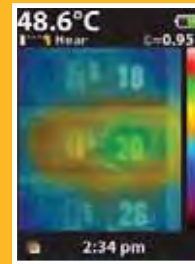
Visual inspection
No issues are obvious to the naked eye.



Traditional IR thermometer
Optimized for single point measurements.



Entry level infrared camera
Challenging to see the exact location.



Visual IR Thermometer
Digital image with heat map overlay detects the exact location of the issue.

Fluke VT02 and VT04 Visual IR Thermometers

FLUKE®

Specifications

Key features	VT02	VT04
Built-in digital camera	Yes	
Thermal heat map overlay	Yes, five blending modes	
Image optics system	PyroBlend™ optic	PyroBlend™ Plus optic *4x sharper image than VT02
Field of view	20° x 20°	28° x 28°
Hi-Lo temperature alarms	-	Yes
Time lapse image capture	-	Yes
Auto-monitor alarm	-	Yes
Battery type	Four (4) AA batteries	Li-Ion rechargeable
Training	No training required	
Ergonomics	Slim pocket-sized design	
Hot and cold markers	Yes	
General features		
Battery life	Eight (8) hours	
Temperature measurement range	-10 °C to +250 °C	
Temperature measurement accuracy	+/- 2 °C or +/- 2 %	
Temperature measurement	Yes, centerpoint	
Storage medium (micro SD card)	Stores up to 10,000 images per Gb (Four (4) Gb card included)	
Infrared spectral band	6.5 µm to 14 µm	
Level and span	Auto	
Focus mechanism	Focus free, no training required with built-in intelligence	
Focus options—exclusive user selectable NEAR/FAR options	NEAR > 23 cm; FAR < 23 cm	
Dimensions (HxWxD)	210 x 75 x 55 mm., 300 g	
File format	.is2 format saved to SD card. User can create professional reports or export images in Smartview (BMP, DIB, GIF, SPE, FIF, JPEG, PNG, TIF and TIFF)	
Safety and compliance	CFR47: 2009 Class A. Part 15 subpart B; CE: EN 61326:2006; IEC/EN 61010-1:2010	
Warranty	Two (2) years	



VT04 Maintenance Kit

Includes a VT04 Visual IR Thermometer and a 1587 Insulation Multimeter



VT04 Electrician's Kit

Includes a VT04 Visual IR Thermometer, a 117 Electricians MultiMeter and a 376 AC/DC True-RMS Clamp Meter



VT04 HVAC kit

Includes a VT04 Visual IR Thermometer, 902 True-RMS HVAC Clamp Meter and a 116 Digital Multimeter

Included Accessories

Hard Case, hand strap, mini SD card and adapter, SmartView® software on CD, Lithium Ion batteries and Micro USB Charger/Power Supply (including mains adapters) (VT04) or 4 AA batteries (VT02), Quick Start Guide, Users manual

Ordering Information

Fluke VT02 Visual IR Thermometer
Fluke VT04 Visual IR Thermometer
Fluke VT04 Maintenance Kit
Fluke VT04 HVAC Kit
Fluke VT04 Electrician's Kit

Recommended accessories



Fluke VT04 charger



Battery



C90